

FINAL



| | | | | | | |
|-----------|---------|-----------|---------|-----------|--------------|--|
| Ηλυσιακός | | 77 | - | 79 | Αρης Νικαίας | |
| 63% | 15 / 24 | FT | 17 / 26 | 65% | | |
| 46% | 16 / 35 | 2p | 19 / 38 | 50% | | |
| 37% | 10 / 27 | 3p | 8 / 20 | 40% | | |
| 40 | 26 - 14 | Rb | 24 - 10 | 34 | | |
| | 16 | Tu | 15 | | | |

Referees: Φασόλης - Τζιμης



| Each Period | 1st | 2nd | 3rd | 4th |
|--------------|-----|-----|-----|-----|
| Ηλυσιακός | 12 | 27 | 18 | 20 |
| Αρης Νικαίας | 25 | 17 | 11 | 26 |

| End of Period | 1st | 2nd | 3rd | 4th |
|---------------|-----|-----|-----|-----|
| Ηλυσιακός | 12 | 39 | 57 | 77 |
| Αρης Νικαίας | 25 | 42 | 53 | 79 |

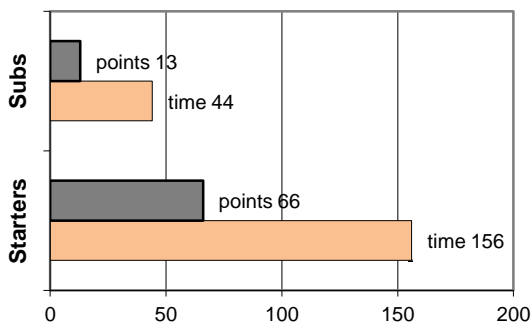


Coach: Π. Ζερβουλάκος
Γ.Ν.Ο. ΑΡΗΣ ΝΙΚΑΙΑΣ

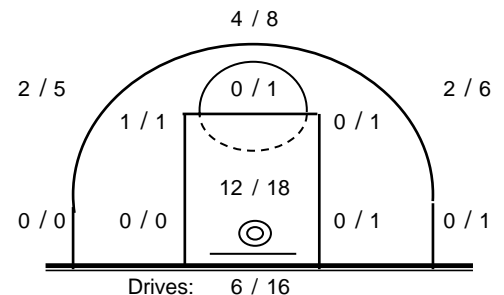
Fast Breaks 4 / 6

| # | Player | Time (min) | Points | Ft | 2p | 3p | +/- | Rebs | As | St | Tu | Bl | Fouls | Rkg* | | | |
|-------------|--------------------|------------|--------|--------|---------|---------|--------|------|----|----|----|----|-------|------|----|----|----|
| | | | | de | of | de | of | de | of | de | of | de | of | | | | |
| 4 | Γαλίτης Μ. | 21 | 8 | 0 / 0 | 1 / 1 | 2 / 4 | -22 | 0 | 0 | 1 | 1 | 1 | 0 | 1 | 2 | 7 | |
| 16 | Αλτσαντζής Κ. | 11 | 5 | 1 / 2 | 2 / 5 | 0 / 0 | 13 | 2 | 0 | 2 | 2 | 1 | 0 | 2 | 3 | 6 | |
| 6 | Αλεξανδρόπουλος Χ. | 20 | 5 | 0 / 0 | 1 / 1 | 1 / 1 | 8 | 3 | 0 | 3 | 0 | 1 | 0 | 1 | 1 | 10 | |
| 7 | Βασιλακάκης Ευ. | 4 | 0 | 0 / 0 | 0 / 1 | 0 / 0 | -4 | 0 | 1 | 0 | 0 | 0 | 0 | 0 | 3 | - | |
| 8 | Γούνης Ι. | 0 | 0 | 0 / 0 | 0 / 0 | 0 / 0 | 0 | 0 | 0 | 0 | 0 | 0 | 0 | 0 | 0 | - | |
| 9 | Πορτελάνος Αν. | 8 | 0 | 0 / 0 | 0 / 0 | 0 / 1 | -1 | 1 | 0 | 0 | 0 | 0 | 1 | 0 | 1 | 1 | |
| 10 | Κρητικός Γ. | 35 | 16 | 8 / 10 | 4 / 7 | 0 / 5 | 10 | 6 | 1 | 6 | 0 | 3 | 0 | 8 | 3 | 16 | |
| 11 | Κόλλιας Σ. | 37 | 20 | 4 / 8 | 8 / 15 | 0 / 0 | 4 | 5 | 6 | 4 | 4 | 4 | 0 | 6 | 3 | 24 | |
| 12 | Χατζόγλου Π. | 30 | 13 | 1 / 2 | 3 / 3 | 2 / 4 | -4 | 4 | 0 | 1 | 0 | 1 | 0 | 2 | 4 | 14 | |
| 13 | Χατζόβουλος Ηρ. | 0 | 0 | 0 / 0 | 0 / 0 | 0 / 0 | 0 | 0 | 0 | 0 | 0 | 0 | 0 | 0 | 0 | - | |
| 14 | Σιδεράς Ν. | 0 | 0 | 0 / 0 | 0 / 0 | 0 / 0 | 0 | 0 | 0 | 0 | 0 | 0 | 0 | 0 | 0 | - | |
| 15 | Παπουσιής Ν. | 34 | 12 | 3 / 4 | 0 / 5 | 3 / 5 | 6 | 3 | 1 | 1 | 3 | 3 | 0 | 5 | 4 | 9 | |
| Team | | | | | | | | 0 | 1 | | 1 | 0 | 0 | | | | |
| 1st quarter | | | 25 | 6 / 8 | 5 / 9 | 3 / 7 | | 9 | 5 | 6 | 4 | 5 | 0 | 7 | 7 | 34 | |
| 2nd quarter | | | 17 | 0 / 1 | 7 / 12 | 1 / 5 | | 3 | 2 | 4 | 0 | 4 | 1 | 3 | 2 | 13 | |
| 3rd quarter | | | 11 | 3 / 7 | 1 / 7 | 2 / 4 | | 5 | 2 | 4 | 3 | 5 | 0 | 7 | 4 | 8 | |
| 4th quarter | | | 26 | 8 / 10 | 6 / 10 | 2 / 4 | | 7 | 1 | 4 | 3 | 1 | 0 | 8 | 11 | 32 | |
| Final Stats | | | 200 | 79 | 17 / 26 | 19 / 38 | 8 / 20 | 10 | 24 | 10 | 18 | 10 | 15 | 1 | 25 | 24 | 87 |
| | | | | 65% | 50% | 40% | | | | | | | | | | | 34 |

Starters- Subs ratio



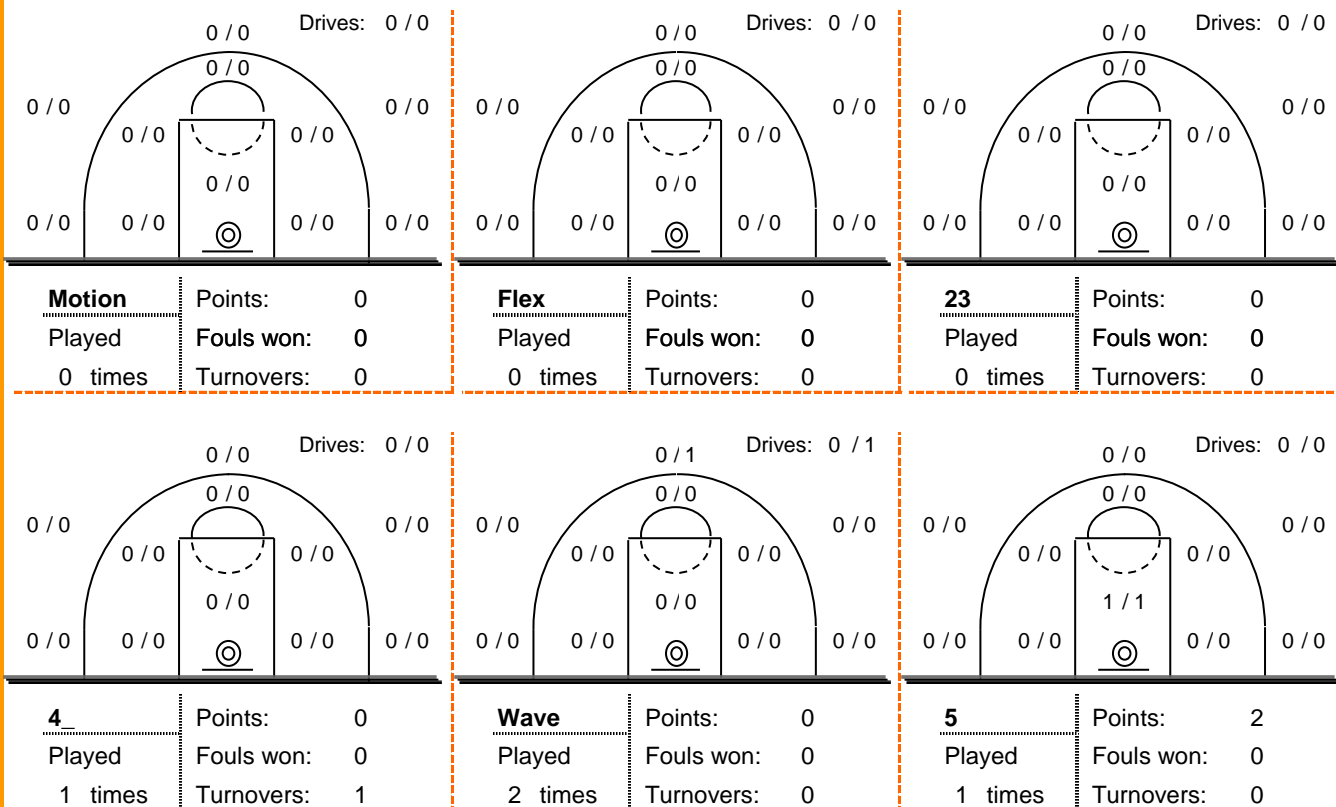
Shot Chart



*Ranking= Pts+Rebs+As+St+B-Mished Shots-Tu (Time Played>7min.)

Offense Analysis

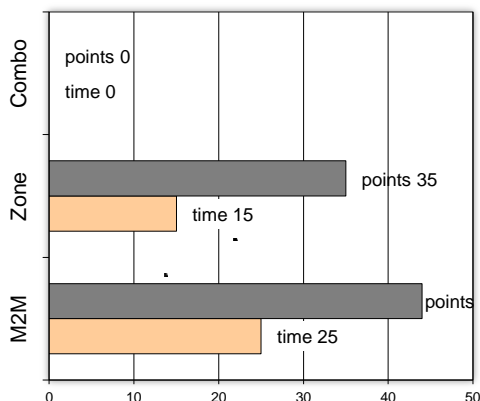
Play performance:



Against Defense Types:

Turnovers:

Fast breaks:



Έγιναν 15 λάθη
1 ήταν χρονικές υπερβάσεις,
0 ήταν παραβάσεις γραμμών,
10 ήταν λάθη κατοχής και
4 ήταν βήματα ή μεταφορά.

Επετεύχθησαν 4 αιφνιδιασμοί
4 ήταν πρωτεύοντες
0 ήταν δευτερεύοντες
0 προήλθαν από λάθος του αντιπάλου

Πραγματοποιήθηκαν συνολικά 85 επιθέσεις, με απόδοση 0.93 έναντι 89 επιθέσεων των αντιπάλων.

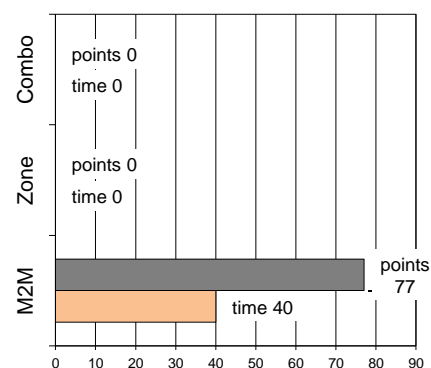
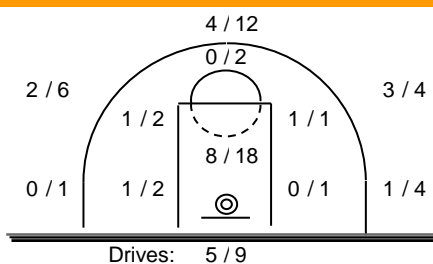
Defense Analysis

Ηλυσιακός

Opponent's shot chart

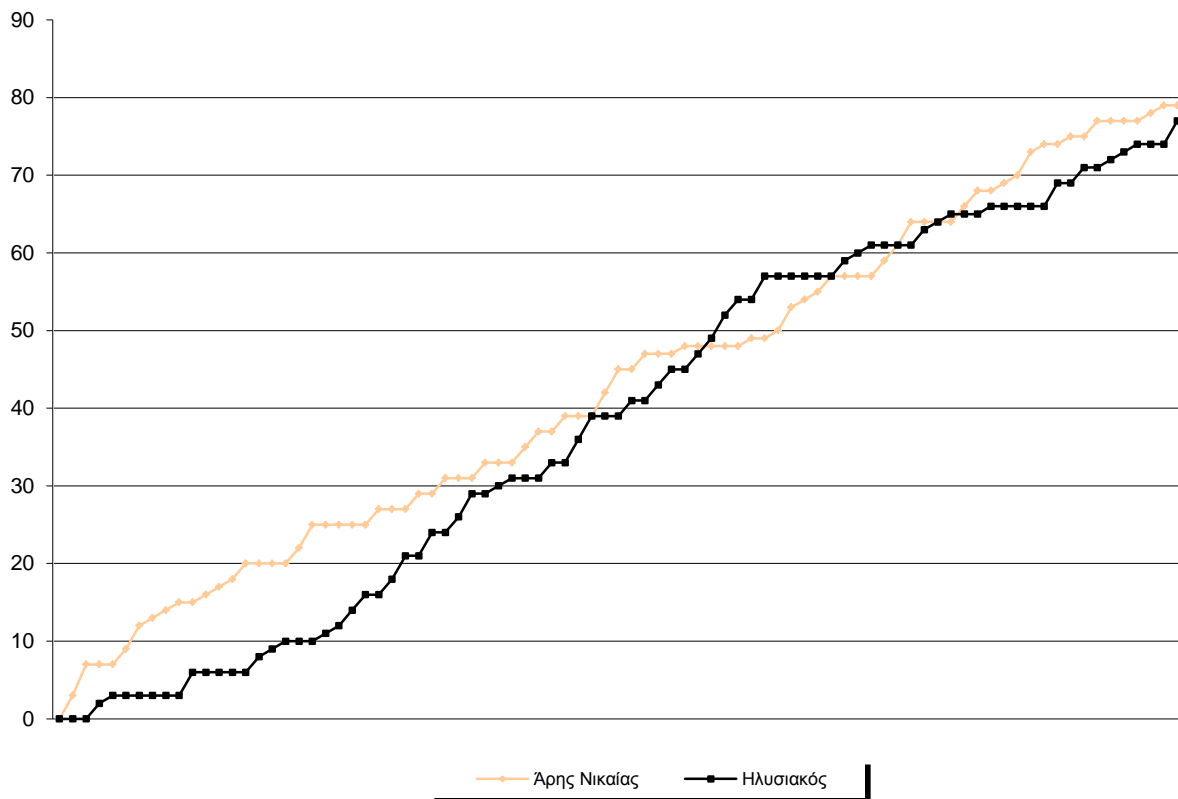
Defense Types Performance

| | | | |
|----|------------------|----|----|
| 4 | Γραμματικός Α. | 12 | -2 |
| 5 | Κουρκουτσάκης Χ. | 0 | |
| 6 | Φώτης Αν. | 22 | -2 |
| 7 | Κοψιάς Π. | 14 | -2 |
| 8 | Ζαραϊδώνης Α. | 0 | |
| 9 | Προύντζος Α. | 3 | -1 |
| 10 | Αντωνόπουλος Α. | 5 | |
| 11 | Μουργανός Ν. | 15 | -3 |
| 12 | Παπανικολάου Μ. | 0 | |
| 17 | Μαραγκουδάκης Γ. | 0 | |
| 14 | Αγγελόπουλος Χ. | 6 | |
| 18 | Κουσιάντζας Κ. | 0 | |

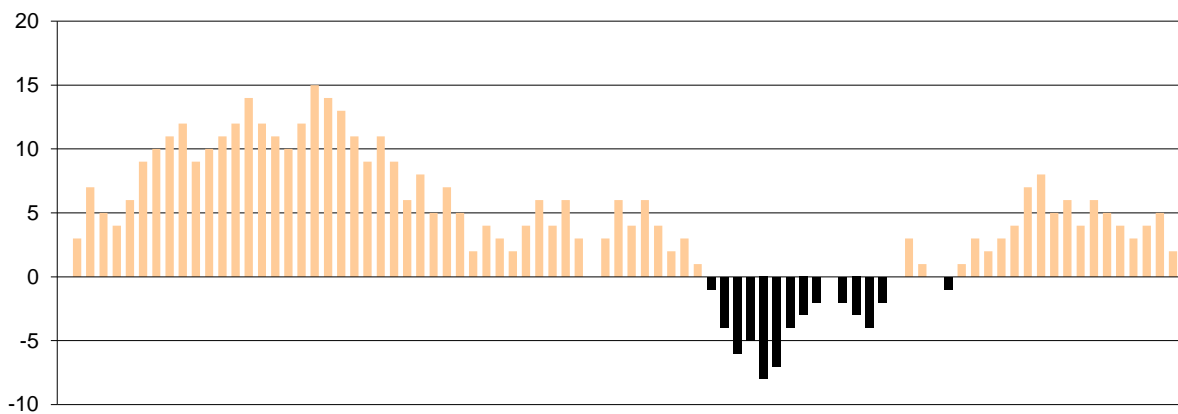


Graphic Stats

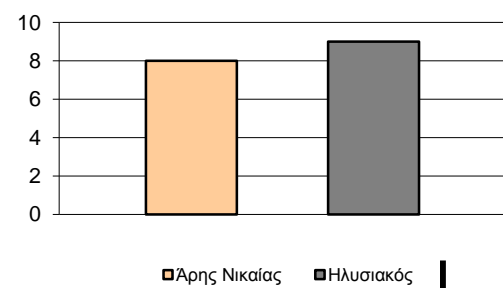
Score Evolution



Score Difference



Largest Scoring Run



Notes